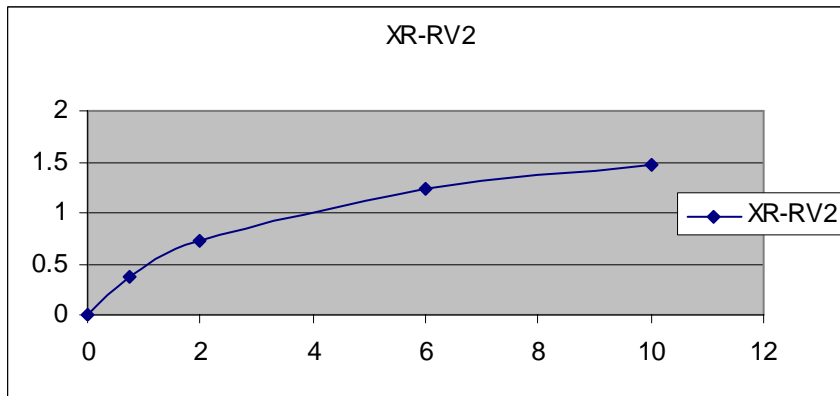
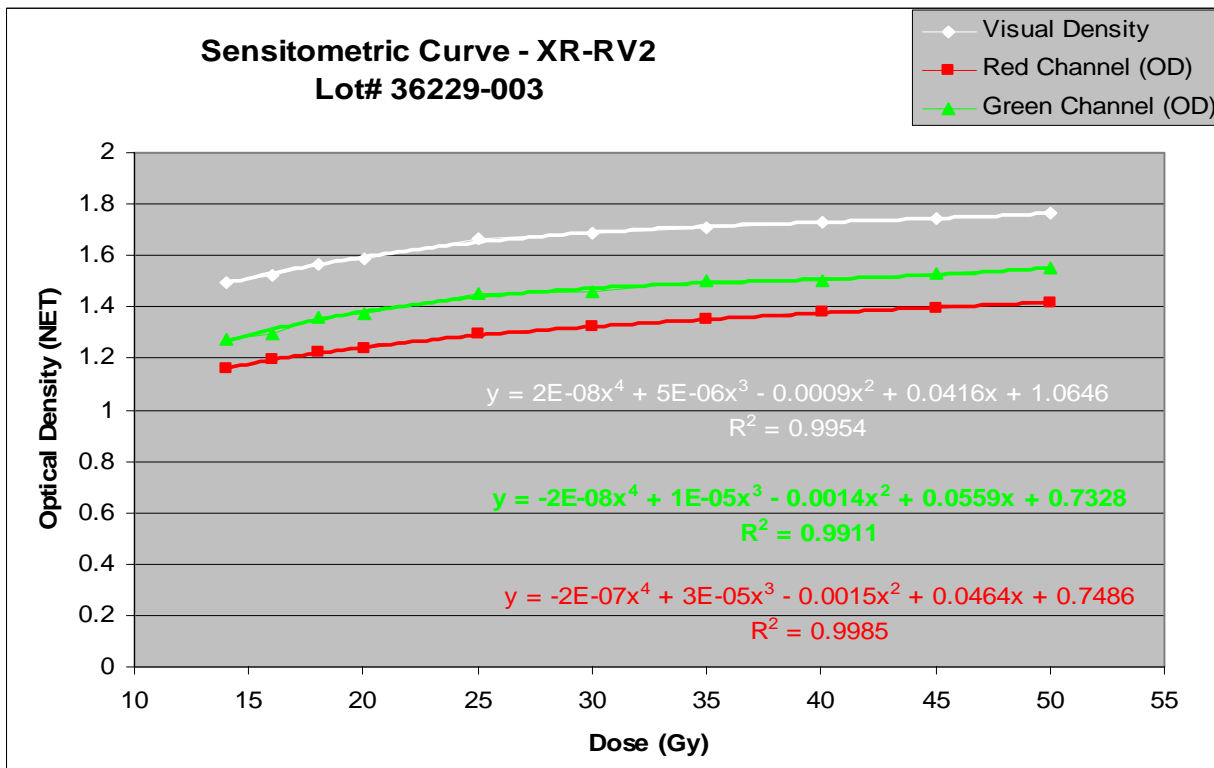


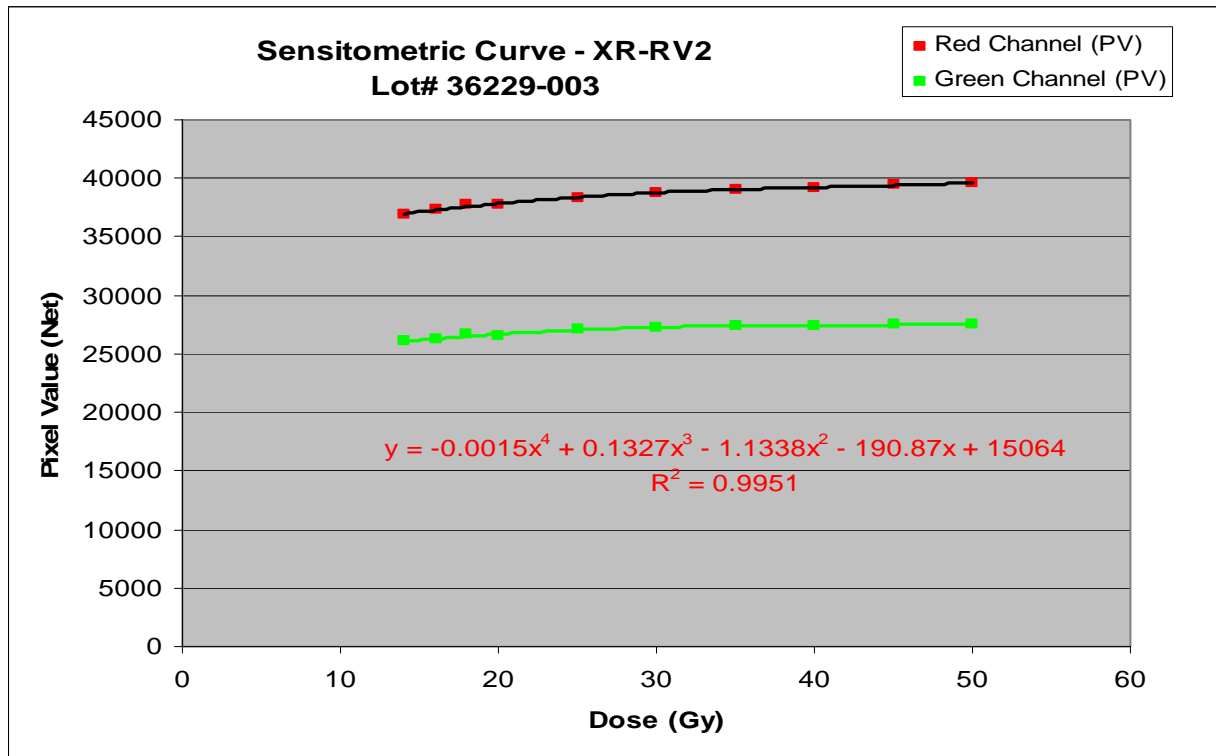
Characteristic Performance Data of



Sensitometric response of GAFCHROMIC® XR-RV2 (lot# 36306-004) dosimetry film using X-Rite 310



Sensitometric response of GAFCHROMIC® XR-RV2 dosimetry film using X-Rite 310



Sensitometric response of GAFCHROMIC® XR-RV2 dosimetry film using Epson Expression 1680

**Dose Fractionation**

Exposures were made with a 120kVp x-ray beam filtered through 2mm of aluminum.

| Dose Fractionation of GAFCHROMIC® XR-RV2 |                          |                        |                    |
|--|--------------------------|------------------------|--------------------|
| Total Dose, Gy                           | Number of Dose Fractions | Number of Measurements | Net Density Change |
| 5  | 1                        | 5                      | 1.151              |
| 5  | 4 - @30 minute intervals | 5                      | 1.147              |

Table 1: Effect of dose fractionation on the response of GAFCHROMIC® XR-RV2 dosimetry film, measured with X-Rite 310 cyan reflection density

**DOSE RATE DEPENDENCE**

Exposures were made with a 120kVp x-ray beam filtered through 2mm of aluminum.

| DOSE RATE DEPENDENCE OF GAFCHROMIC® XR-RV2<br>Lot#36306-004: 2.75Gy total dose<br>X-Rite 310 cyan reflection density |                     |                        |
|--|---------------------|------------------------|
| DOSE-RATE Gy/min   | AVERAGE NET DENSITY | DEVIATION FROM AVERAGE |
| 2.0  | 0.821               | -0.24%                 |
| 0.02   | 0.823               |                        |
| AVERAGE ALL  | 0.822               |                        |

Table 2: Effect of dose rate on the response of GAFCHROMIC® XR-RV2 dosimetry film